

VSpin 350 – Smart Spindle



Quality features

- never crash again due to faulty travel paths or contour deviations
- Monitoring and storage of all relevant data of the deburring process: The component with contour, the burr characteristics, the spindle speed, the deflection, the direction in degrees and much more process data
- Seamless verification for system integrators. Increased safety and precision during system setup and on-going safety and precision in the running process
- Component position and component location can be determined with an accuracy of 0.2mm using the deflection data
- Teaching takes place in a fraction of the time previously required thanks to audio visual feedback
- **Qualität Made in Germany**

Accessories

- | | |
|----------------------|------------|
| – VPort | 600 660 85 |
| – VCable | 600 675 96 |
| – Pressure regulator | 600 585 56 |
| – Adapter UR | 600 588 63 |



Ihr Ansprechpartner

Herr Claus Bay

Technischer Vertrieb

☎ 07159 180 93 -518

☎ 07159 180 93 -100

✉ c.bay@mannesmann-demag.com

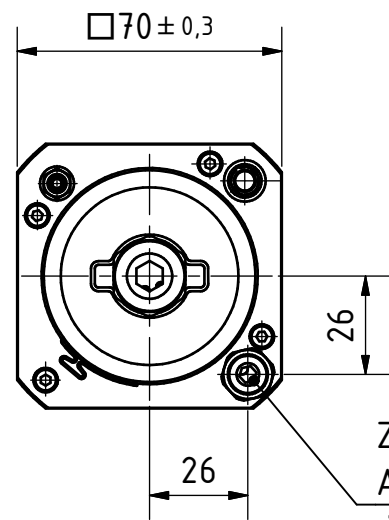
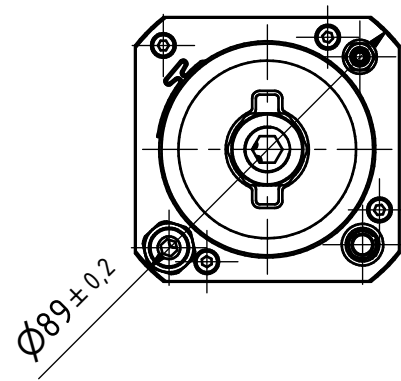
VSpin 350 – Smart Spindle – 600 618 75

Technische Daten

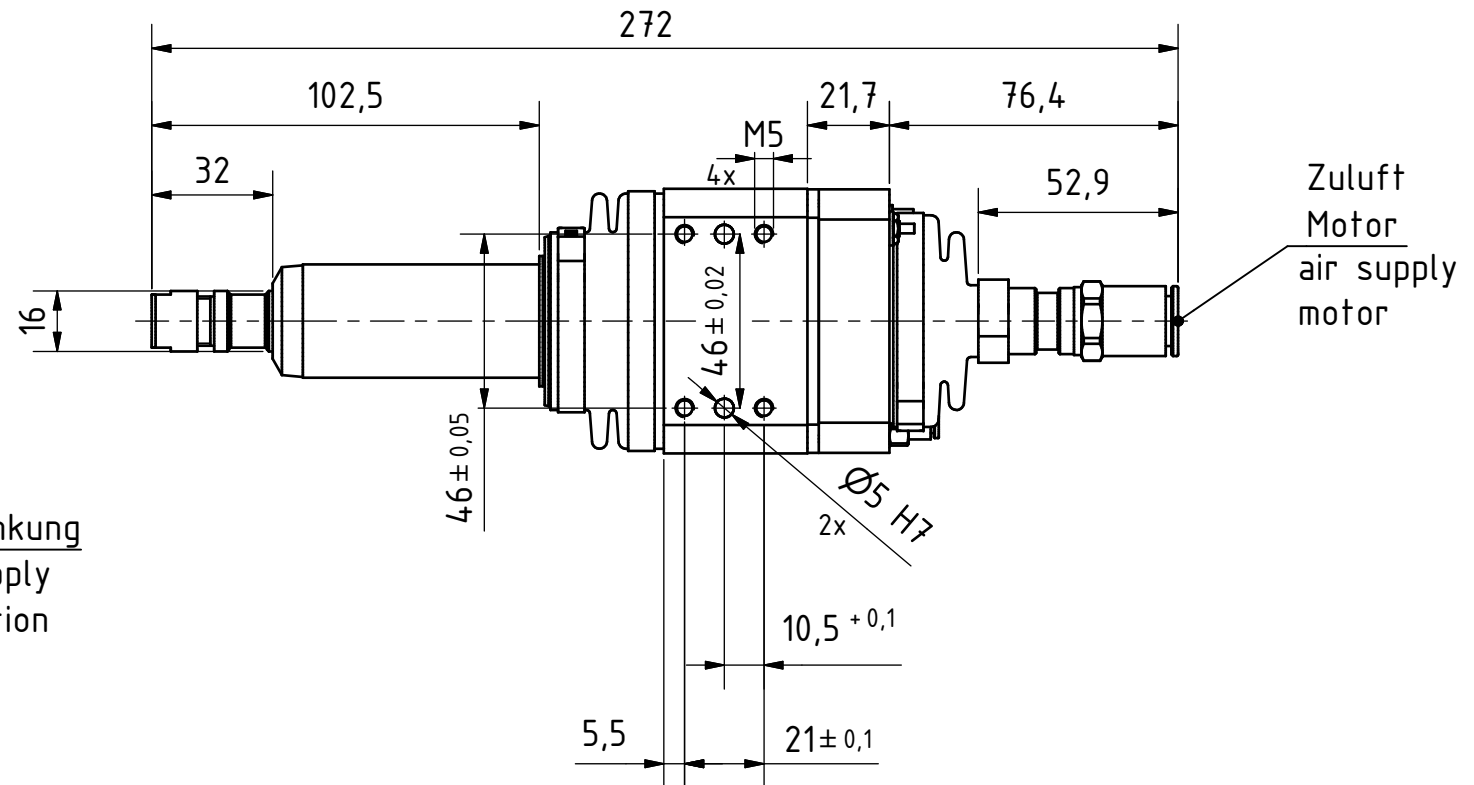
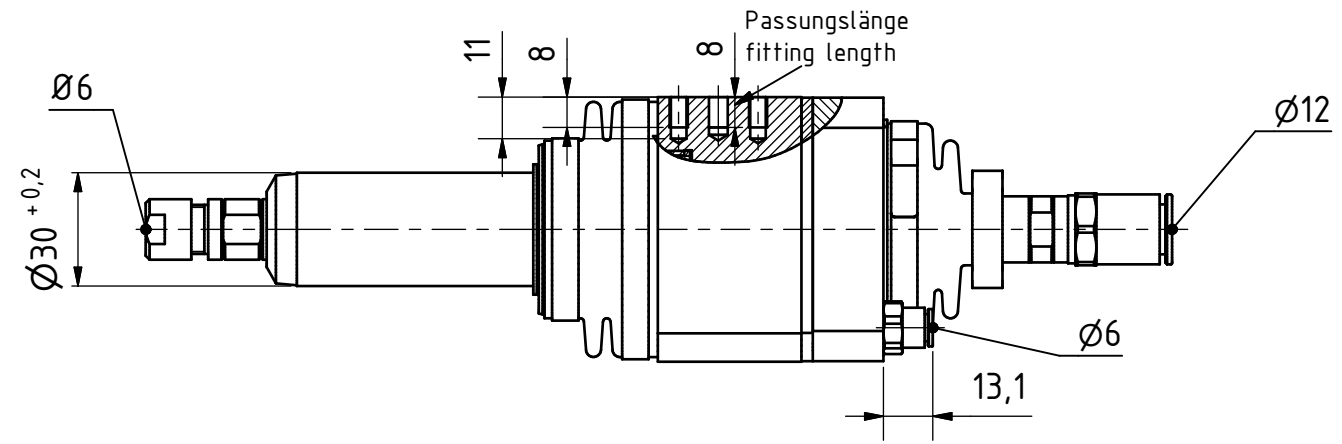
Type	VSpin 350
Air supply	geölt
Free speed	35.000 min ⁻¹
ER collet	6 mm
Power	0,30 kW
Non-lubricated	Nein
Radial deflection	+/- 4°
Exhaust air	vorne
Fully variable force of compliance	8-55 N
Direction of rotation	rechtsdrehend
Noise level	79 dB(A)
Air consumption	8,3 l/s
Weight	1,80 kg
Connection air supply (hose) ø mm, inside outside	10 12
Accessories supplied	Schlüssel, VCable
Maximum deflection	3,5°
Deflection force	8-50 N
Operating voltage	8,0-13,0 V
Current min. max. value (Note 1)	0,1 0,2 A
Power consumption min max. value	1,1 2,2 Watt
Buzzer volume	max. 85 dB(A)
Data transmission	BLE 4.2/5
Max. power BLE	5 (3,3) dBm (mW)
Operating temperature	+10 bis +85°C
Humidity relative	10-80 %, nicht tropfend
Protection class	IP 40
Tolerance deflection	+/- 0,1°
Tolerance angle	+/- 5°
Cable Vspin (VCable)	6 x 0,14 mm ² LiYCY, 20 Meter

All data related to 6,3 bar working pressure.

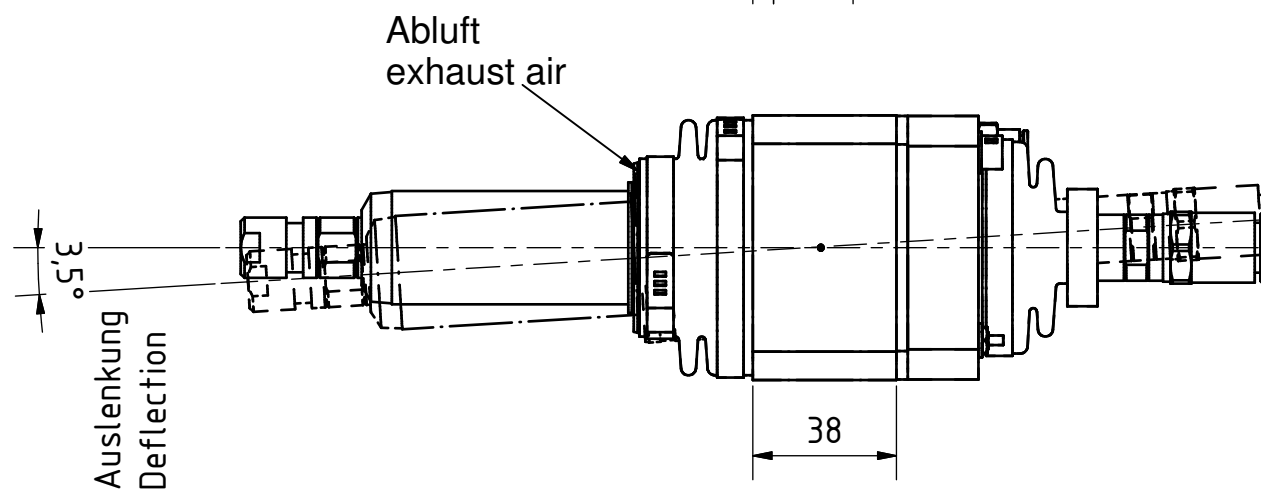
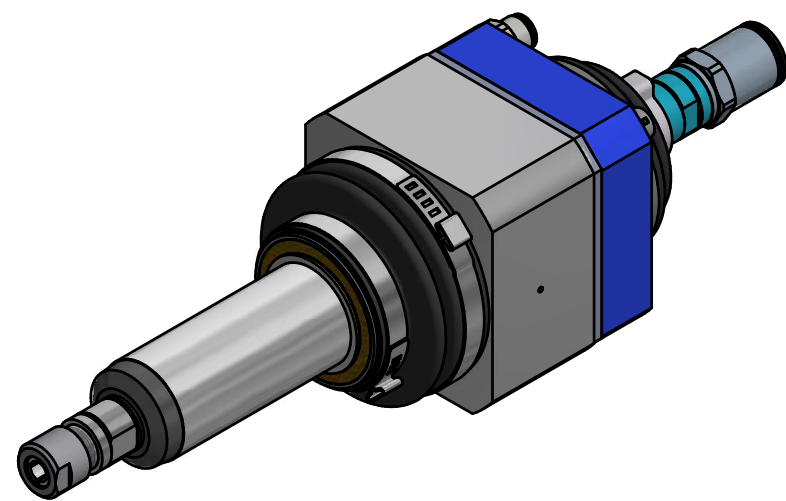
Subject to technical alterations.



Zuluft Auslenkung
air supply deflection



Zuluft Motor
air supply motor



Auslenkung
Deflection

Abluft
exhaust air

VSpin 350
60061875

**MANNESMANN
DEMAG**

Änderungsstand: -- 10.06.2020