

**RIVETTI FILETTATI**



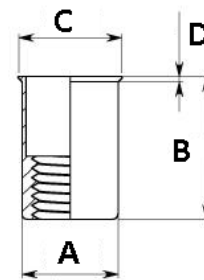
## Rivetti Filettati Inox

**TECNIMETAL**

Via degli Andreani, 9  
40037 Sasso Marconi (BO)  
Tel: 051 735744 - Fax: 051 735808  
E-mail: [info@tecnimetal-tm.com](mailto:info@tecnimetal-tm.com)  
[www.tecnimetal-tm.com](http://www.tecnimetal-tm.com)

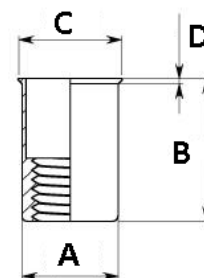
## TESTA SVASATA – SPESSORE SOTTILE

Cod.	Thread size	Grip Range	Hole Size +0.1/-0	A max	B max	C	D +0.3/-0
SS-SM325	M3X0.5	0.5~2.0	5.0	5.0	9.0	6.0	0.5
SS-SM425	M4X0.7	0.5~2.5	6.0	6.0	11.0	7.0	0.5
SS-SM525	M5X0.8	0.5~3.0	7.0	7.0	12.0	8.0	0.5
SS-SM625	M6X1.0	0.5~3.0	9.0	9.0	14.0	10.0	0.5
SS-SM825	M8X1.25	0.5~3.0	11.0	11.0	16.0	12.0	0.5
SS-SM1025	M10X1.50	1.0~3.5	13.0	13.0	19.0	14.2	0.8
SS-SM1240	M10X1.75	1.0~4.0	16.0	16.0	22.5	17.2	0.7



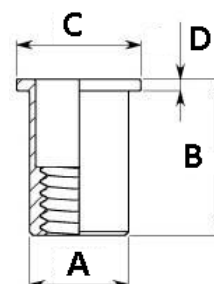
## TESTA SVASATA – SPESSORE SOTTILE

Cod.	Thread size	Grip Range	Hole Size +0.1/-0	A max	B max	C	D +0.3/-0
SS-SM3-A	M3X0.5	0.5~1.5	4.8	4.72	9.20	5.5	0.5
SS-SM4-A	M4X0.7	0.5~2.0	6.4	6.32	10.50	7.0	0.5
SS-SM5-A	M5X0.8	0.5~3.0	7.2	7.11	12.00	8.0	0.5
SS-SM6-A	M6X1.0	0.5~3.0	9.6	9.5	14.60	10.5	0.5
SS-SM8-A	M8X1.25	0.5~3.0	10.6	10.57	16.20	11.5	0.5
SS-SM10-A	M10X1.50	1.0~3.5	14.5	14.3	18.85	15.6	0.7



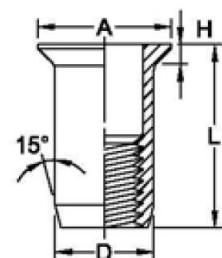
## TESTA PIATTA

Cod.	Thread size	Grip Range	Hole Size +0.1/-0	A max	B max	C	D +0.3/-0
SS-LM325	M3X0.5	0.3~2.0	5.0	5.0	9.0	8.0	0.8
SS-LM425	M4X0.7	0.3~2.5	6.0	6.0	11.0	9.0	1.0
SS-LM435	M4X0.7	2.5~4.0	6.0	6.0	12.5	9.0	1.0
SS-LM525	M5X0.8	0.3~3.0	7.0	7.0	12.0	10.0	1.0
SS-LM535	M5X0.8	3.0~4.5	7.0	7.0	13.5	10.0	1.0
SS-LM625	M6X1.0	0.5~3.0	9.0	9.0	14.0	12.0	1.5
SS-LM640	M6X1.0	3.0~5.0	9.0	9.0	16.0	12.0	1.5
SS-LM825	M8X1.25	0.5~3.0	11.0	11.0	16.0	15.0	1.5
SS-LM840	M8X1.25	3.0~5.5	11.0	11.0	18.5	15.0	1.5
SS-LM1025	M10X1.50	1.0~3.5	13.0	13.0	19.0	17.0	2.0
SS-LM1040	M10X1.50	3.5~6.0	13.0	13.0	21.5	17.0	2.0



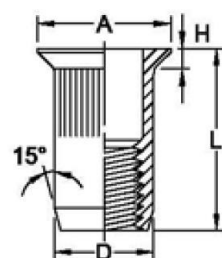
## TESTA SVASATA

Cod.	Thread size	Grip Range	Hole Size +0.1/-0	A +0/-0.5	L +0/-0.5	D +/-0.1	H +0.3/-0
SS-YS-M4	M4X0.7	2.0~4.0	6.0	9.0	12.0	5.9	1.5
SS-YS-M5	M5X0.8	2.0~4.5	7.0	10.0	13.5	6.9	1.5
SS-YS-M6	M6X1.0	2.0~4.5	9.0	12.0	16.0	8.9	1.5
SS-YS-M8	M8X1.25	2.0~4.5	11.0	14.0	18.0	10.9	1.5



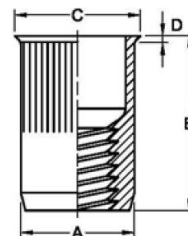
## TESTA SVASATA - ZIGRINATI

Cod.	Thread size	Grip Range	Hole Size +0.1/-0	A +0/-0.5	L +0/-0.5	D +/-0.1	H +0.3/-0
SS-YSR-M4	M4X0.7	2.0~4.0	6.0	9.0	12.0	5.9	1.5
SS-YSR-M5	M5X0.8	2.0~4.5	7.0	10.0	13.5	6.9	1.5
SS-YSR-M6	M6X1.0	2.0~4.5	9.0	12.0	16.0	8.9	1.5
SS-YSR-M8	M8X1.25	2.0~4.5	11.0	14.0	18.0	10.9	1.5



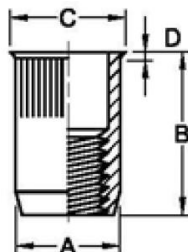
## TESTA SVASATA – ZIGRINATI - SPESSORE SOTTILE – TIPO AVD

Cod.	Thread size	Grip Range	Hole Size +0.1/-0	A max	B max	C	D +0.3/-0
SS-AVD SM4	M4X0.7	0.5~2.0	6.4	6.32	10.50	7.0	0.5
SS-AVD SM5	M5X0.8	0.5~3.0	7.2	7.11	12.00	8.0	0.5
SS-AVD SM6	M6X1.0	0.5~3.0	9.6	9.50	14.60	10.5	0.5
SS-AVD SM8	M8X1.25	0.5~3.0	10.6	10.57	16.20	11.50	0.5



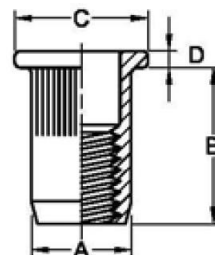
## TESTA SVASATA SPESSORE SOTTILE - ZIGRINATI

Cod.	Thread size	Grip Range	Hole Size +0.1/-0	A MAX	B +0.5/-0	C +/-0.3	D +0.3/-0
SSR-SM325	M3X0.5	0.5~2.0	5.0	5.0	9.00	6.0	0.50
SSR-SM425	M4X0.7	0.5~2.5	6.0	6.0	11.00	7.0	0.50
SSR-SM435	M4X0.7	2.5~4.0	6.0	6.0	12.5	7.0	0.50
SSR-SM525	M5X0.8	0.5~3.0	7.0	7.0	12.00	8.0	0.50
SSR-SM535	M5X0.8	3.0~4.5	7.0	7.0	13.50	8.0	0.50
SSR-SM625	M6X1.0	0.7~3.0	9.0	9.0	14.00	10.0	0.50
SSR-SM640	M6X1.0	3.0~5.0	9.0	9.0	16.00	10.0	0.50
SSR-SM825	M8X1.25	1.0~3.0	11.0	11.0	16.00	12.0	0.50
SSR-SM840	M8X1.25	3.0~5.5	11.0	11.0	18.50	12.0	0.50
SSR-SM1025	M10X1.50	1.0~3.5	13.0	13.0	19.00	14.2	0.80
SSR-SM1040	M10X1.50	3.5~6.0	13.0	13.0	21.50	14.2	0.80



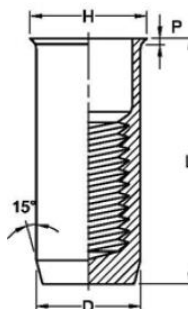
## TESTA PIATTA - ZIGRINATI

Cod.	Thread size	Grip Range	Hole Size +0.1/-0	A MAX	B +0.5/-0	C +/-0.3	D +0.3/-0
SSR-LM325	M3X0.5	0.3~2.0	5.0	5.0	9.0	8.0	0.8
SSR-LM425	M4X0.7	0.3~2.5	6.0	6.0	11.0	9.0	1.0
SSR-LM435	M4X0.7	2.5~4.0	6.0	6.0	12.5	9.0	1.0
SSR-LM525	M5X0.8	0.3~3.0	7.0	7.0	12.0	10.0	1.0
SSR-LM535	M5X0.8	3.0~4.5	7.0	7.0	13.5	10.0	1.0
SSR-LM625	M6X1.0	0.5~3.0	9.0	9.0	14.0	12.0	1.5
SSR-LM640	M6X1.0	3.0~5.0	9.0	9.0	16.0	12.0	1.5
SSR-LM825	M8X1.25	0.5~3.0	11.0	11.0	16.0	15.0	1.5
SSR-LM840	M8X1.25	3.0~5.5	11.0	11.0	18.5	15.0	1.5
SSR-LM1025	M10X1.50	1.0~3.5	13.0	13.0	19.0	17.0	2.0
SSR-LM1040	M10X1.50	3.6~6.0	13.0	13.0	21.5	17.0	2.0



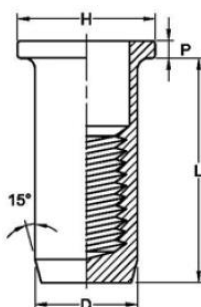
## TESTA SVASATA –SPESSORE SOTTILE – CHIUSI

Cod.	Thread size	Grip Range	Hole Size +0.1/-0	D +/-0.1	L +0.5/-0	H +/-0.25	P +0.3/-0
SS-CE-SM4	M4X0.7	0.5~2.5	6.10	5.9	16.00	7.0	0.5
SS-CE-SM5	M5X0.8	0.5~2.5	7.10	6.9	17.50	8.0	0.5
SS-CE-SM6	M6X1.0	0.5~3.0	9.10	8.9	21.00	10.0	0.5
SS-CE-SM8	M8X1.25	0.5~3.0	11.10	10.9	23.50	12.0	0.5
SS-CE-SM10	M10X1.50	1.0~3.5	13.10	12.9	26.50	14.2	0.8



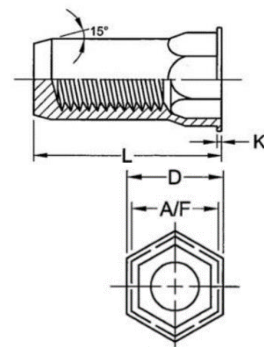
## TESTA PIATTA – CHIUSI

Cod.	Thread size	Grip Range	Hole Size +0.1/-0	D +/-0.1	L +0.5/-0	H +/-0.25	P +0.3/-0
SS-CE-LM4	M4X0.7	0.5~2.5	6.10	5.9	16.00	9.0	1.0
SS-CE-LM5	M5X0.8	0.5~2.5	7.10	6.9	18.00	10.0	1.0
SS-CE-LM6	M6X1.0	0.5~3.0	9.10	8.9	21.00	12.0	1.5
SS-CE-LM8	M8X1.25	0.5~3.0	11.10	10.9	23.50	15.0	1.5
SS-CE-LM10	M10X1.50	1.0~3.5	13.10	12.9	26.50	17.0	2.0



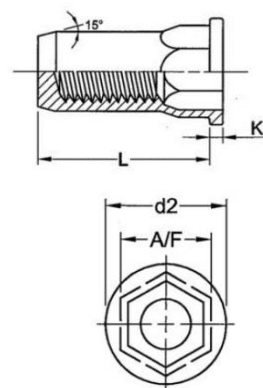
### ESAGONALI – CHIUSI – SPESSORE SOTTILE

Cod.	Thread size	Grip Range	Hex Hole	A/F +/-0.15	D +/-0.25	K +0.3/-0	L +0.5/-0
SS-CE-HA-SM4	M4X0.7	0.5~2.5	6.1	6.0	7.00	0.50	16.0
SS-CE-HA-SM5	M5X0.8	0.5~3.0	7.1	7.0	8.00	0.50	18.0
SS-CE-HA-SM6	M6X1.0	0.5~3.0	9.1	9.0	10.00	0.50	21.0
SS-CE-HA-SM8	M8X1.25	0.5~3.0	11.1	11.0	12.00	0.50	23.5
SS-CE-HA-SM10	M10X1.5	1.0~3.5	13.1	13.0	14.20	0.80	26.5



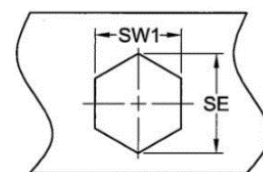
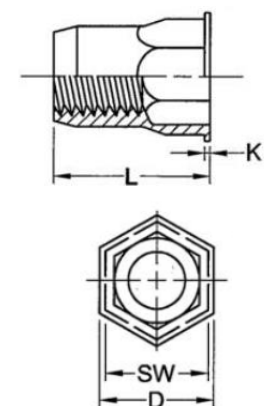
### ESAGONALI – CHIUSI – TESTA PIATTA

Cod.	Thread size	Grip Range	Hex Hole	A/F +/-0.15	D +/-0.25	K +0.3/-0	L +0.5/-0
SS-CE-HA-LM4	M4X0.7	0.5~2.5	6.1	6.0	7.00	1.00	16.0
SS-CE-HA-LM5	M5X0.8	0.5~3.0	7.1	7.0	8.00	1.00	18.0
SS-CE-HA-LM6	M6X1.0	0.5~3.0	9.1	9.0	10.00	1.50	21.0
SS-CE-HA-LM8	M8X1.25	0.5~3.0	11.1	11.0	12.00	1.50	23.5



### ESAGONALI – APERTI – SPESSORE SOTTILE

Cod.	Thread size	Grip Range	Hex Hole (SW1)	SW +0/-0.15	SE Min.	D +/-0.3	K +0.3/-0	L +0.5/-0
SS-HA SM3	M3X0.5	0.5~2.0	5.1	5.0	5.5	6.00	0.5	9.0
SS-HA SM4	M4X0.7	0.5~2.5	6.1	6.0	6.8	7.00	0.5	11.0
SS-HA SM4-L	M4X0.7	2.5~4.0	6.1	6.0	6.8	7.00	0.5	11.0
SS-HA SM5	M5X0.8	0.5~3.0	7.1	7.0	7.9	8.00	0.5	12.0
SS-HA SM5-L	M5X0.8	3.0~4.5	7.1	7.0	7.9	8.00	0.5	13.5
SS-HA SM6	M6X1.0	0.5~3.0	9.1	9.0	10.2	10.00	0.5	14.0
SS-HA SM6-L	M6X1.0	3.0~5.0	9.1	9.0	10.2	10.00	0.5	16.0
SS-HA SM8	M8X1.25	0.5~3.0	11.1	11.0	12.4	12.00	0.5	16.0
SS-HA SM8-L	M8X1.25	3.0~5.0	11.1	11.0	12.4	12.00	0.5	18.5
SS-HA SM10	M10X1.50	1.0~3.5	13.1	13.0	14.7	14.20	0.7	19.0



### ESAGONALI – APERTI – TESTA PIATTA

Cod.	Thread size	Grip Range	Hex Hole (SW1)	SW +0/-0.15	SE Min.	d2 +/-0.3	K +0.3/-0	L +0.5/-0
SS-HA LM4	M4X0.7	0.5~2.5	6.1	6.0	6.8	9.0	1.0	11.0
SS-HA LM4-L	M4X0.7	2.5~4.0	6.1	6.0	6.8	9.0	1.0	12.5
SS-HA LM5	M5X0.8	0.5~3.0	7.1	7.0	7.9	10.0	1.0	12.0
SS-HA LM6	M6X1.0	0.5~3.0	9.1	9.0	10.2	12.0	1.5	14.0
SS-HA LM8	M8X1.25	0.5~3.0	11.1	11.0	12.4	14.5	1.5	16.0
SS-HA LM10	M10X1.50	1.0~3.5	13.1	13.0	14.7	16.5	2.0	19.0

