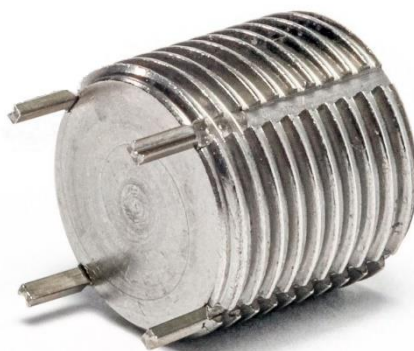


INSERTI CON CHIAVETTE



TECNIMETAL

Via degli Andreani, 9 - 40037 Sasso Marconi (BO)
Tel: +39 051 735744
E-mail: info@tecnimetal-tm.com - www.tecnimetal-tm.com

Caratteristiche tecniche inserti con chiavette

Inserti filettati ad alta resistenza in Inox AISI303 1.4305.

Come standard sono disponibili in misure metriche passo grosso, a richiesta metrici passi fini, UNC-UNF e altri materiali e/o trattamenti superficiali.

Sono in versione Free Running o Locking, la versione autobloccante ha un trattamento superficiale Dry-Lube.

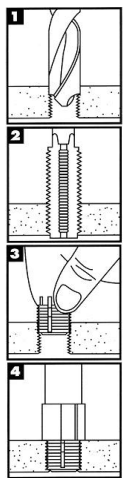
Hanno 2 o 4 chiavette di ancoraggio che una volta posizionate rendono l'inserto meccanicamente bloccato contro lo svitamento da rotazione o vibrazioni. Vengono utilizzati per ottenere filettature ad elevata resistenza su differenti materiali, dalle leghe leggere agli acciai o per riparare filettature danneggiate.

Possono essere installati in modo semplice in quanto il filetto ospite è standard per cui non richiede l'utilizzo di maschi speciali, posso essere eventualmente rimossi e sostituiti.

Gli inserti sono forniti con le chiavette di ancoraggio già posizionate all'interno delle scanalature. Le chiavette pre-posizionate fanno sì che avvitando l'inserto esso si posizioni automaticamente alla corretta profondità di installazione.

Posa Inserti con Chiavette

INSTALLAZIONE



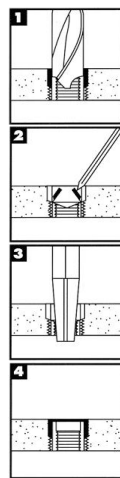
1 Forare con una punta standard e svasare a 82°-100° con uno svasatore standard

2 Maschiare con un maschio standard

3 Avvitare l'inserto a mano o con il suo attrezzo di posa (l'inserto va automaticamente a battuta alla corretta profondità di installazione)

4 Tramite l'attrezzo di posa piantare nel materiale le chiavette di ancoraggio utilizzando un martello o una pressa

RIMOZIONE



1 Forare con una punta standard per rimuovere il materiale che tiene in posizione le chiavette di ancoraggio (consultare le tabelle del catalogo per il diametro della punta)

2 Flettere le chiavette all'interno e romperle

3 Svitare l'inserto con un attrezzo per l'estrazione

4 Avvitare un nuovo inserto esattamente uguale a quello rimosso e piantare le chiavette in corrispondenza delle impronte delle precedenti



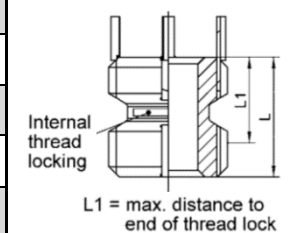
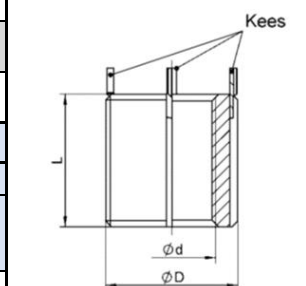
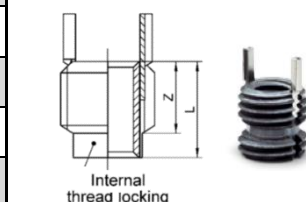
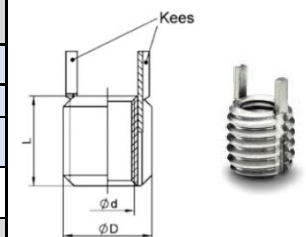
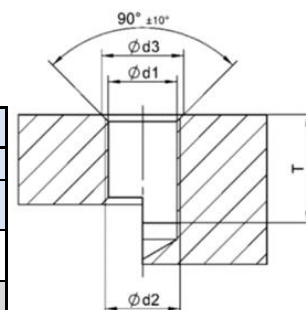
Attrezzi per Posi



Cod. Attrezzo	Cod. Maschio	Cod. Inserto	Cod. Attrezzo	Cod. Maschio	Cod. Inserto	Cod. Attrezzo	Cod. Maschio	Cod. Inserto
KTTW-M2	KN-M4X0.7	KNCM(L)2x0.4_IN	KTTW-02	KN-UNC2	KNC(L)0256_IN	KTHD-1011	KN-UNF14	KNH(L)1011_IN
KTTW-M2.5	KN-M4.5X0.75	KNCM(L)2.5x0.45_IN	KTTW-04	KN-UNF3	KNC(L)0440_IN	KTHD-1018	KN-UNF14	KNH(L)1018_IN
KTTW-M3	KN-M5X0.8	KNCM(L)3x0.5_IN	KTTW-06	KN-UNF1	KNC(L)0632_IN	KTHD-1210	KN-UNF18	KNH(L)1210_IN
KTTW-M4	KN-M6X0.75	KNCM(L)4x0.7_IN	KTTW-08	KN-UNF4	KNC(L)A0832_IN	KTHD-1216	KN-UNF18	KNH(L)1216_IN
KTTW-M5	KN-M8X1.25	KNM(L)5x0.8_IN	KTTW-1024	KN-UNC5	KN(L)1024_IN	KTHD-1409	KN-UNF20	KNH(L)1409_IN
KTTW-M6	KN-M10X1.25	KNM(L)6x1_IN	KTTW-1032	KN-UNC5	KN(L)1032_IN	KTHD-1414	KN-UNF20	KNH(L)1414_IN
KTTW-M8	KN-M12X1.25	KNM(L)8x1.25_IN	KTTW-420	KN-UNC6	KN(L)420_IN	KTHD-1608	KN-UNF22	KNH(L)1608_IN
KTTW-M8X1	KN-M12X1.25	KNM(L)8x1_IN	KTTW-428	KN-UNC6	KN(L)428_IN	KTHD-1612	KN-UNF22	KNH(L)1612_IN
KTTW-M10	KN-M14X1.5	KNM(L)10x1.5_IN	KTTW-518	KN-UNC7	KN(L)518_IN	KTXHD-1024	KN-UNC7	KNHXH(L)1024_IN
KTTW-M10X1.25	KN-M14X1.5	KNM(L)10x1.25_IN	KTTW-524	KN-UNC7	KN(L)524_IN	KTXHD-1032	KN-UNC7	KNHXH(L)1032_IN
KTTW-M12	KN-M16X1.5	KNM(L)12x1.75_IN	KTTW-616	KN-UNC8	KN(L)616_IN	KTXHD-420	KN-UNC8	KNHXH(L)420_IN
KTTW-M12X1.5	KN-M16X1.5	KNM(L)12x1.5_IN	KTTW-624	KN-UNC8	KN(L)624_IN	KTXHD-428	KN-UNC8	KNHXH(L)428_IN
KTTW-M12X1.25	KN-M16X1.5	KNM(L)12x1.25_IN	KTTW-714	KN-UNC9	KN(L)714_IN	KTXHD-518	KN-UNC9	KNHXH(L)518_IN
KTHD-M4	KN-M8X1.25	KNHM(L)4x0.7_IN	KTTW-720	KN-UNC9	KN(L)720_IN	KTXHD-524	KN-UNC9	KNHXH(L)524_IN
KTHD-M5	KN-M10X1.25	KNHM(L)5x0.8_IN	KTTW-813	KN-UNC10	KN(L)813_IN	KTXHD-616	KN-UNC10	KNHXH(L)616_IN
KTHD-M6	KN-M12X1.25	KNHM(L)6x1.0_IN	KTTW-820	KN-UNC10	KN(L)820_IN	KTXHD-624	KN-UNC10	KNHXH(L)624_IN
KTHD-M8	KN-M14X1.5	KNHM(L)8x1.25_IN	KTHD-0832	KN-UNC5	KNH(L)0832_IN	KTXHD-714	KN-111611NS	KNHXH(L)714_IN
KTHD-M10	KN-M16X1.5	KNHM(L)10x1.5_IN	KTHD-1024	KN-UNC6	KNH(L)1024_IN	KTXHD-720	KN-111611NS	KNHXH(L)720_IN
KTHD-M10X1.25	KN-M16X1.5	KNHM(L)10x1.25_IN	KTHD-1032	KN-UNC6	KNH(L)1032_IN	KTXHD-813	KN-131616UN	KNHXH(L)813_IN
KTHD-M12	KN-M18X1.5	KNHM(L)12x1.25_IN	KTHD-420	KN-UNC7	KNH(L)420_IN	KTXHD-820	KN-131616UN	KNHXH(L)820_IN
KTHD-M12X1.25	KN-M18X1.5	KNHM(L)12x1.75_IN	KTHD-428	KN-UNC7	KNH(L)428_IN	KTXHD-912	KN-UNF14	KNHXH(L)912_IN
KTHD-M12X1.5	KN-M18X1.5	KNHM(L)12x1.5_IN	KTHD-518	KN-UNC8	KNH(L)518_IN	KTXHD-918	KN-UNF14	KNHXH(L)918_IN
KTHD-M14	KN-M20X1.5	KNHM(L)14x2.0_IN	KTHD-524	KN-UNC8	KNH(L)524_IN	KTXHD-1011	KN-UNF16	KNHXH(L)1011_IN
KTHD-M14X1.5	KN-M20X1.5	KNHM(L)14x1.5_IN	KTHD-616	KN-UNC9	KNH(L)616_IN	KTXHD-1018	KN-UNF16	KNHXH(L)1018_IN
KTHD-M16	KN-M22X1.5	KNHM(L)16x2.0_IN	KTHD-624	KN-UNC9	KNH(L)624_IN	KTXHD-1210	KN-UNF20	KNHXH(L)1210_IN
KTHD-M18X1.5	KN-M24X1.5	KNHM(L)18x1.5_IN	KTHD-714	KN-UNC10	KNH(L)714_IN	KTXHD-1216	KN-UNF20	KNHXH(L)1216_IN
KTHD-M20X2.0	KN-M30X2.0	KNHM(L)20x2.0_IN	KTHD-720	KN-UNC10	KNH(L)720_IN	KTXHD-1409	KN-UNF22	KNHXH(L)1409_IN
KTHD-M20X1.5	KN-M20X1.5	KNHM(L)20x2.5_IN	KTHD-813	KN-111611NS	KNH(L)813_IN	KTXHD-1414	KN-UNF22	KNHXH(L)1414_IN
KTHD-M22X1.5	KN-M32X2.0	KNHM(L)22x1.5_IN	KTHD-820	KN-111611NS	KNH(L)820_IN	KTXHD-1608	KN-UNF25	KNHXH(L)1608_IN
KTHD-M24	KN-M33X2.0	KNHM(L)24x3.0_IN	KTHD-912	KN-131616UN	KNH(L)912_IN	KTXHD-1612	KN-UNF24	KNHXH(L)1612_IN
KTHD-M24X1.5	KN-M33X2.0	KNHM(L)24x1.5_IN	KTHD-918	KN-131616UN	KNH(L)918_IN			

Inserti con Chiavette Versione Industriale Metrica

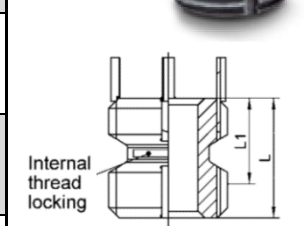
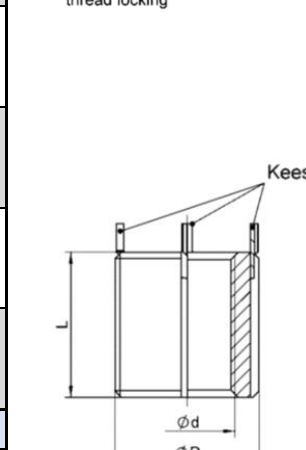
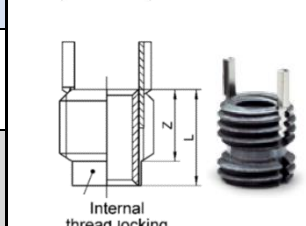
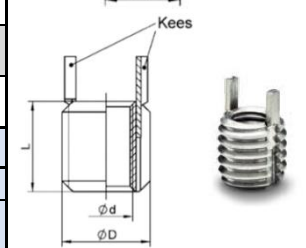
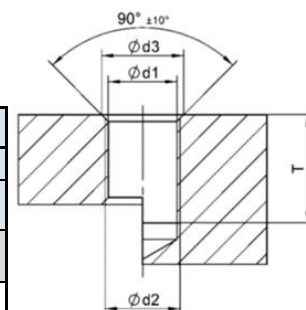
Serie Miniature												
Codice Standard Locking	Dimensioni				Installazione					Rimozione		
	Interno Ød 6H	Esterno ØD	L ±0.25	Z	d1 preforo	d3 Svas.	Ø d2 6H	T Min.	Ø Forat.	Prof.		
KNCM2x0.4_IN KNCML2x0.4_IN	M2x0.4	M4x0.7	3	2.2	3.4	+0.080 -0.025	4.1	M4x0.7	4.0	2.8	2.00	
KNCM2.5x0.45_IN KNCML2.5x0.45_IN	M2.5x0.45	M4.5x0.75	3.8	2.7	3.9	+0.080 -0.025	4.6	M4.5x0.75	5.0	3.0	2.00	
KNCM3x0.5_IN KNCML3x0.5_IN	M3x0.5	M5x0.8	4.25	3.1	4.4	+0.080 -0.025	5.1	M5x0.8	5.5	3.5	2.25	
KNCM4x0.7_IN KNCML4x0.7_IN	M4x0.7	M6x0.75	5.25	4.1	5.5	+0.080 -0.025	6.1	M6x0.75	6.5	4.6	2.50	
Serie Leggera												
Codice Standard Locking	Dimensioni				Installazione					Rimozione		
	Interno Ød 6H	Esterno ØD	L ±0.30	L1	d1 preforo	d3 Svas.	Ø d2 6H	T Min.	Ø Forat.	Prof.		
KNM5x0.8_IN KNML5x0.8_IN	M5x0.8	M8x1.25	8	7.6	6.90	+0.100 -0.025	8.25	M8x1.25	9.5	5.5	4.00	
KNM6x1_IN KNML6x1_IN	M6x1.0	M10x1.25	10	7.0	8.80	+0.100 -0.025	10.25	M10x1.25	11.5	7.5	4.75	
KNM8x1_IN KNML8x1_IN	M8x1	M12x1.25	12	8.2	10.80	+0.100 -0.025	12.25	M12x1.25	13.5	9.5	4.75	
KNM8x1.25_IN KNML8x1.25_IN	M8x1.25	M12x1.25	12	9.5	10.80	+0.100 -0.025	12.25	M12x1.25	13.5	9.5	4.75	
KNM10x1.25_IN KNML10x1.25_IN	M10x1.25	M14x1.5	14	9.0	12.80	+0.130 -0.025	14.25	M14x1.5	15.5	11.5	4.75	
KNM10x1.5_IN KNML10x1.5_IN	M10x1.5	M14x1.5	14	10.0	12.80	+0.130 -0.025	14.25	M14x1.5	15.5	11.5	4.75	
KNM12x1.25_IN KNML12x1.25_IN	M12x1.25	M16x1.5	16	9.5	14.75	+0.130 -0.025	16.25	M16x1.5	17.5	13.5	4.75	
KNM12x1.5_IN KNML12x1.5_IN	M12x1.5	M16x1.5	16	11.2	14.75	+0.130 -0.025	16.25	M16x1.5	17.5	13.5	4.75	
KNM12x1.75_IN KNML12x1.75_IN	M12x1.75	M16x1.5	16	10.2	14.75	+0.130 -0.025	16.25	M16x1.5	17.5	13.5	4.75	
Serie Rinforzata												
Codice Standard Locking	Dimensioni				Installazione					Rimozione		
	Interno Ød 6H	Esterno ØD	L ±0.30	L1	d1 preforo	d3 Svas.	Ø d2 6H	T Min.	Ø Forat.	Prof.		
KNHM4x0.7_IN KNHML4x0.7_IN	M4x0.7	M8x1.25	8	8.0	6.9	+0.100 -0.025	8.25	M8x1.25	9.5	5.5	4.00	
KNHM5x0.8_IN KNHML5x0.8_IN	M5x0.8	M10x1.25	10	8.7	8.8	+0.100 -0.025	10.25	M10x1.25	11.5	7.5	4.75	
KNHM6x1.0_IN KNHML6x1.0_IN	M6x1.0	M12x1.25	12	9.5	10.8	+0.100 -0.025	12.25	M12x1.25	13.5	9.5	4.75	
KNHM8x1.25_IN KNHML8x1.25_IN	M8x1.25	M14x1.5	14	10.0	12.8	+0.100 -0.025	14.25	M14x1.5	15.5	11.5	4.75	
KNHM10x1.25_IN KNHML10x1.25_IN	M10x1.25	M16x1.5	16	10.0	14.8	+0.130 -0.025	16.25	M16x1.5	17.5	13.5	4.75	
KNHM10x1.5_IN KNHML10x1.5_IN	M10x1.5	M16x1.5	16	10.0	14.8	+0.130 -0.025	16.25	M16x1.5	17.5	13.5	4.75	
KNHM12x1.25_IN KNHML12x1.25_IN	M12x1.25	M18x1.5	18	10.7	16.8	+0.130 -0.025	18.25	M18x1.5	19.5	15.5	4.75	
KNHM12x1.5_IN KNHML12x1.5_IN	M12x1.5	M18x1.5	18	10.7	16.8	+0.130 -0.025	18.25	M18x1.5	19.5	15.5	4.75	
KNHM12x1.75_IN KNHML12x1.75_IN	M12x1.75	M18x1.5	18	10.7	16.8	+0.130 -0.025	18.25	M18x1.5	19.5	15.5	4.75	
KNHM14x1.5_IN KNHML14x1.5_IN	M14x1.5	M20x1.5	20	12.4	17.85	+0.130 -0.025	20.25	M20x1.5	22.5	17.50	4.75	
KNHM14x2.0_IN KNHML14x2.0_IN	M14x2.0	M20x1.5	20	12.4	17.85	+0.130 -0.025	20.25	M20x1.5	22.5	17.50	4.75	
KNHM16x2.0_IN KNHML16x2.0_IN	M16x2.0	M22x1.5	22	12.4	20.5	+0.130 -0.025	22.25	M22x1.5	24.5	17.75	4.75	
KNHM18x1.5_IN KNHML18x1.5_IN	M18x1.5	M24x1.5	24	16.8	22.5	+0.130 -0.025	24.25	M24x1.5	26.5	19.75	6.35	
KNHM20x1.5_IN KNHML20x1.5_IN	M20x1.5	M30x2.0	30	17.5	28	+0.130 -0.025	30.25	M30x2.0	34.5	25.75	6.35	
KNHM20x2.5_IN KNHML20x2.5_IN	M20x2.5	M30x2.0	30	17.5	28	+0.130 -0.025	30.25	M30x2.0	34.5	25.75	6.35	
KNHM22x1.5_IN KNHML22x1.5_IN	M22x1.5	M32x2.0	32	18.3	30	+0.130 -0.025	32.25	M32x2.0	36.5	27.75	6.35	
KNHM24x2.0_IN KNHML24x2.0_IN	M24x2.0	M33x2.0	33	19	31	+0.130 -0.025	37.5	M33x2.0	37.5	28.75	6.35	
KNHM24x3.0_IN KNHML24x3.0_IN	M24x3.0	M33x2.0	33	19	31	+0.130 -0.025	37.5	M33x2.0	37.5	28.75	6.35	



Numero Chiavette: 2 chiavette fino a M6, 4 chiavette da M8 a M12 | Filetto interno: M 6H
 Materiale standard: Inserti 303 CRES – Chiavette 302 CRES

Inserti con Chiavette Versione Industriale UN

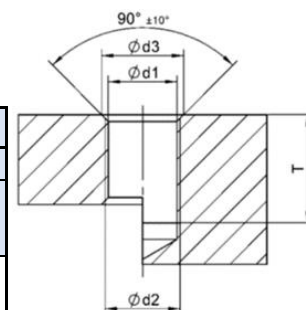
Serie Miniature											
Codice Standard Locking	Dimensioni				Installazione				Rimozione		
	Interno Ød 2B	Esterno ØD 2A	L	Z	d1 preforo	d3 Svas.	Ø d2	T Min.	Ø Forat.	Prof.	
KNCA0256_IN KNCAL0256_IN	2-56 UNC	8-32 UNF	.09	.120	.161	+.003 -.001	.134	8-32 UNF	.140	#33 (.113)	1/16
KNCA0440_IN KNCAL0440_IN	4-40 UNC	10-32 UNF	.17	.125	.161	+.003 -.001	.194	10-32 UNF	.160	#29 (.136)	3/32
KNC0632_IN KNCL0632_IN	6-32 UNC	12-28 UNF	.17	.125	.187	+.003 -.001	.220	12-28 UNF	.160	#21 (.159)	3/32
KNCA0832_IN KNCAL0832_IN	8-32 UNC	1/4-28 UNF	.22	.175	.228	+.003 -.001	.255	1/4-28 UNF	.210	#8 (.199)	1/8
Serie Leggera											
Codice Standard Locking	Dimensioni				Installazione				Rimozione		
	Interno Ød	Esterno ØD	L	L1	d1 preforo	d3 Svasatura	Ø d2	T Min.	Ø Forat.	Prof.	
KN1024_IN KNL1024_IN	10-24 UNC	5/16-18	.31	.22	.272	.323	5/16-18	.37	7/32	5/32	
KN1032_IN KNL1032_IN	10-32 UNF										
KN420_IN KNL420_IN	1/4-20 UNC	3/8-16	.37	.22	.332	.385	3/8-16	.43	9/32	3/16	
KN428_IN KNL428_IN	1/4-28 UNF										
KN518_IN KNL518_IN	5/16-18 UNC	7/16-14	.43	.22	.397	.447	7/16-14	.5	11/32	3/16	
KN524_IN KNL524_IN	5/16-24 UNF										
KN616_IN KNL616_IN	3/8-16 UNC	1/2-13	.50	.24	.453	.510	1/2-13	.56	13/32	3/16	
KN624_IN KNL624_IN	3/8-24 UNF										
KN714_IN KNL714_IN	7/16-14 UNC	9/16-12	.56	.27	.516	.572	9/16-12	.62	15/32	3/16	
KN720_IN KNL720_IN	7/16-20 UNF										
KN813_IN KNL813_IN	1/2-13 UNC	5/8-11	.62	.28	.578	.635	5/8-11	.68	17/32	3/16	
KN820_IN KNL820_IN	1/2-20 UNF										
Serie Rinforzata											
Codice Standard Locking	Dimensioni				Installazione				Rimozione		
	Interno Ød	Esterno ØD	L	L1	d1 preforo	d3 Svasatura	Ø d2	T Min.	Ø Foratura	Profondità	
KNH0832_IN KNHL0832_IN	8-32 UNC	5/16-18	.31	.22	.272	.323	5/16-18	.37	7/32	1/8	
KNH1024_IN KNHL1024_IN	10-24 UNC										
KNH1032_IN KNHL1032_IN	10-32 UNF	3/8-16	.31	.22	.332	.385	3/8-16	.37	9/32	1/8	
KNH420_IN KNHL420_IN	1/4-20 UNC										
KNH428_IN KNHL428_IN	1/4-28 UNF	7/16-14	.37	.22	.397	.447	7/16-14	.43	11/32	3/16	
KNH518_IN KNHL518_IN	5/16-18 UNC										
KNH524_IN KNHL524_IN	5/16-24 UNF	1/2-13	.43	.22	.453	.510	1/2-13	.50	13/32	3/16	
KNH616_IN KNHL616_IN	3/8-16 UNC										
KNH624_IN KNHL624_IN	3/8-24 UNF	9/16-12	.50	.25	.516	.572	9/16-12	.56	15/32	3/16	
KNH714_IN KNHL714_IN	7/16-14 UNC										
KNH720_IN KNHL720_IN	7/16-20 UNF	5/8-11	.62	.28	.578	.635	5/8-11	.68	17/32	3/16	
KNH813_IN KNHL813_IN	1/2-13 UNC										
KNH820_IN KNHL820_IN	1/2-20 UNF	11/16-11	.68	.28	.641	.700	11/16-11	.75	19/32	3/16	



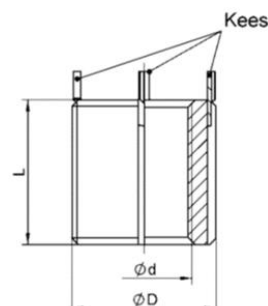
L1 = max. distance to end of thread lock

Numero Chiavette: 2 chiavette fino a 1/4", 4 chiavette da 5/16"
 Materiale standard: Inserti 303 CRES – Chiavette 302 CRES
 Filetto interno: 2B

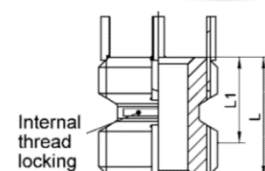
Inserti con Chiavette Versione Industriale UN



Serie Rinforzata											
Codice Standard Locking	Dimensioni				Installazione				Rimozione		
	Interno Ød	Esterno ØD	L	L1	d1 preforo	d3 Svasatura	Ø d2	T Min.	Ø Foratura	Profondità	
KNH912_IN KNHL912_IN	9/16-12 UNC	13/16-16	.81	.32	.766	.822	13/16-16	.94	23/32	3/16	
KNH918_IN KNHL918_IN	9/16-18 UNF										
KNH1011_IN KNHL1011_IN	5/8-11 UNC	7/8-14	.87	.33	.828	.885	7/8-14	1.00	25/32	3/16	
KNH1018_IN KNHL1018_IN	5/8-18 UNF										
KNH1210_IN KNHL1210_IN	¾-10 UNC	1-1/8-12	1.12	.49	1.062	1.145	1-1/8-12	1.31	31/32	5/16	
KNH1216_IN KNHL1216_IN	¾-16 UNF										
KNH1409_IN KNHL1409_IN	7/8-9 UNC	1-1/4-12	1.25	.49	1.187	1.270	1-1/4-12	1.44	1-3/32	5/16	
KNH1414_IN KNHL1414_IN	7/8-14 UNF										
KNH1608_IN KNHL1608_IN	1-8 UNC	1-3/8-12	1.37	.55	1.312	1.395	1-3/8-12	1.56	1-7/32	5/16	
KNH1612_IN KNHL1612_IN	1-16 UNF										



Serie Extra Rinforzata											
Codice Standard Locking	Dimensioni				Installazione				Rimozione		
	Interno Ød	Esterno ØD	L	L1	d1 preforo	d3 Svasatura	Ø d2	T Min.	Ø Foratura	Profondità	
KNHXXH1024_IN KNHXXHL1024_IN	10-24 UNC	7/16-14	.31	.22	.397	.447	7/16-14	.37	11/32	3/16	
KNHXXH1032_IN KNHXXHL1032_IN	10-32 UNF										
KNHXXH420_IN KNHXXHL420_IN	1/4-20 UNC	1/2-13	.37	.22	.453	.510	1/2-13	.43	13/32	3/16	
KNHXXH428_IN KNHXXHL428_IN	1/4-28 UNF										
KNHXXH518_IN KNHXXHL518_IN	5/16-18 UNC	9/16-12	.43	.22	.516	.572	9/16-12	.50	15/32	3/16	
KNHXXH524_IN KNHXXHL524_IN	5/16-24 UNF										
KNHXXH616_IN KNHXXHL616_IN	3/8-16 UNC	5/8-11	.50	.25	.578	.635	5/8-11	.56	17/32	3/16	
KNHXXH624_IN KNHXXHL624_IN	3/8-24 UNF										
KNHXXH714_IN KNHXXHL714_IN	7/16-14 UNC	11/16-11	.62	.28	.641	.700	11/16-11	.68	19/32	3/16	
KNHXXH720_IN KNHXXHL720_IN	7/16-20 UNF										
KNHXXH813_IN KNHXXHL813_IN	1/2-13 UNC	13/16-16	.68	.28	.766	.822	13/16-16	.75	23/32	3/16	
KNHXXH820_IN KNHXXHL820_IN	1/2-20 UNF										
KNHXXH912_IN KNHXXHL912_IN	9/16-12 UNC	7/8-14	.81	.32	.828	.885	7/8-14	.94	25/32	3/16	
KNHXXH918_IN KNHXXHL918_IN	9/16-18 UNF										
KNHXXH1011_IN KNHXXHL1011_IN	5/8-11 UNC	1-12	.87	.33	.937	1.020	1-12	1.00	27/32	5/16	
KNHXXH1018_IN KNHXXHL1018_IN	5/8-18 UNF										
KNHXXH1210_IN KNHXXHL1210_IN	¾-10 UNC	1-1/4-12	1.12	.49	1.187	1.270	1-1/4-12	1.31	1-3/32	5/16	
KNHXXH1216_IN KNHXXHL1216_IN	¾-16 UNF										
KNHXXH1409_IN KNHXXHL1409_IN	7/8-9 UNC	1-3/8-12	1.25	.49	1.312	1.395	1-3/8-12	1.44	1-7/32	5/16	
KNHXXH1414_IN KNHXXHL1414_IN	7/8-14 UNF										
KNHXXH1608_IN KNHXXHL1608_IN	1-8 UNC	1-1/2-12	1.37	.55	1.437	1.520	1-1/2-12	1.56	1-11/32	5/16	
KNHXXH1612_IN KNHXXHL1612_IN	1-16 UNF										



L1 = max. distance to end of thread lock

Numero Chiavette: 2 chiavette fino a 1/4", 4 chiavette da 5/16"
 Materiale standard: Inserti 303 CRES – Chiavette 302 CRES
 Filetto interno: 2B

